

Kentucky State Update

2021 SNTC Annual Controller's Meeting

Emily Anderson | Charles Rhea | Michelle Stephens



KENTUCKY CABINET FOR
HEALTH AND FAMILY SERVICES



Kentucky Public Health
Prevent. Promote. Protect.

Hello from “The Bluegrass State!”

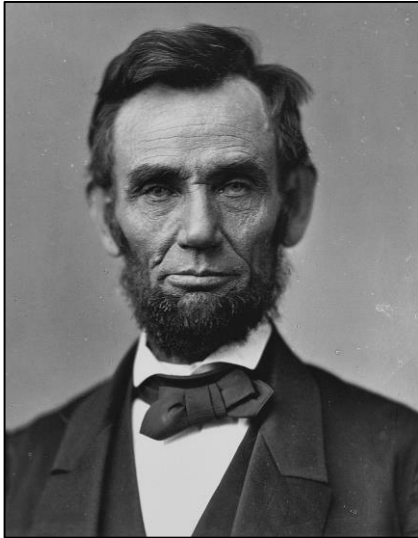


Kentucky Fun Facts

- Kentucky was the 15th state added to the union on June 1st, 1792
- We rank as the 37th state in total land area at 39,732 square miles
- Kentucky is known as the “*Horse Capital of the World*” and is the leading producer of thoroughbreds in the U.S.
- The Bluegrass State is also known for its bourbon – in fact, there are more bourbon barrels in Kentucky than people



Notable Kentucky Natives



Abraham Lincoln
Hodgenville, KY
16th President of the U.S.



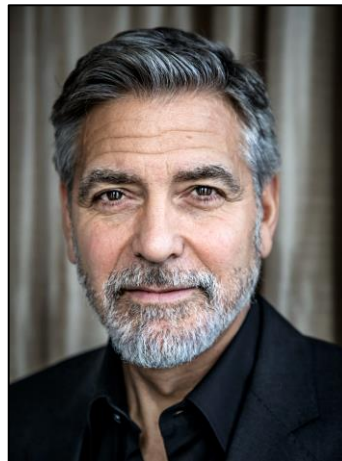
Muhammad Ali
Louisville, KY
American Boxer



Johnny Depp
Owensboro, KY
Actor



Jennifer Lawrence
Louisville, KY
Actor



George Clooney
Lexington, KY
Actor



Loretta Lynn
Butcher Hollow, KY
Singer/Song Writer

Sites to See throughout the State



Churchill Downs
Louisville, KY



Louisville Slugger Museum and Factory
Louisville, KY



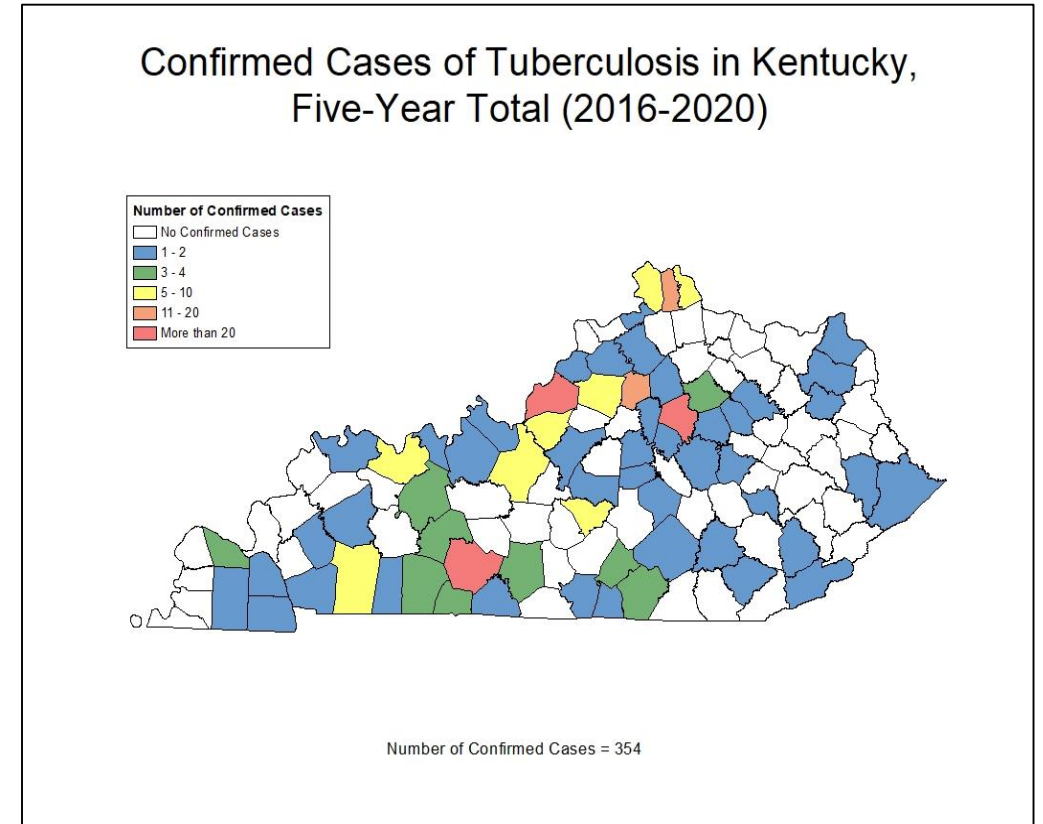
National Corvette Museum
Bowling Green, KY



Mammoth Cave National Park
Edmonson County, KY

Public Health and TB in Kentucky at a Glance

- Kentucky is a southern state with 4.4 million residents
- Kentucky has a decentralized public health system: “*home rule state*”
- We have 120 counties and 61 health jurisdictions
- Between 2016-2020 Kentucky counted an average of 70 confirmed TB cases per year
- Kentucky’s TB cases are typically concentrated in counties with large cities and urban areas



Program Updates and Recent Activities

Kentucky TB Program Staffing Changes



Maria Lasley, RN, BSN, MA, MBA
Former TB Nurse Consultant
SNTC Coach/Mentor



Michelle Stephens, RN
TB Outreach and Education Nurse



Tim Kreimer, MSN, MBA, RN-CEN
TB Education Nurse

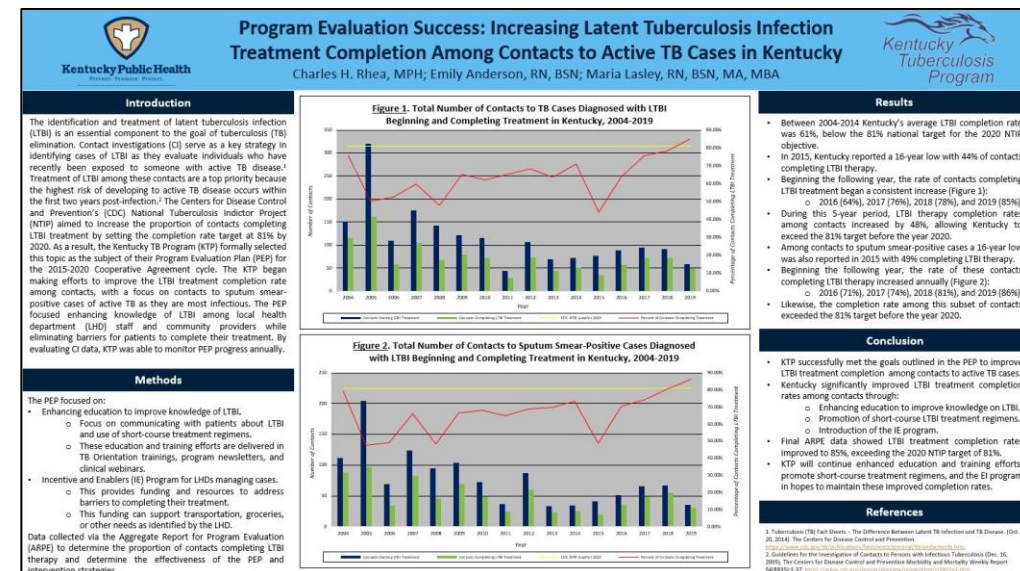
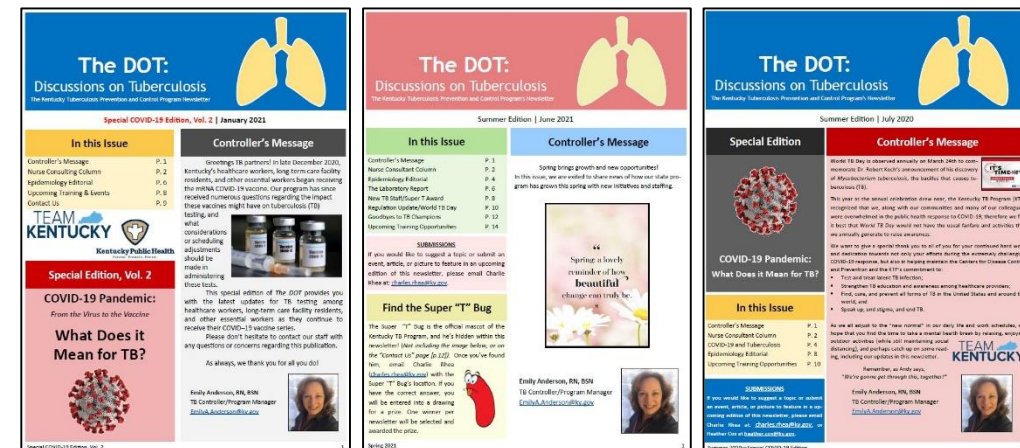
Kentucky's COVID-19 Response

- Kentucky counted our first case of COVID-19 on March 6, 2020
 - All Division of Epidemiology and Health Planning staff were pulled to assist with response
- Kentucky TB Program staff assisted with:
 - Kentucky COVID-19 provider call center and on-call shifts
 - Reviewing laboratory results and data entry
 - Developed Kentucky's COVID-19 cluster tracking protocols
- Local health departments assigned to assist with local response
 - Local nursing staff were significantly affected
 - Nonetheless, were able to maintain TB case management – including DOT, suspect follow-up, and basic initial contact investigation



Recent TB Program Activities in Kentucky

- Development of virtual Nurse Case Management training course in partnership with SNTC
- Continue to publish TB program newsletter
 - Including two special COVID-19 editions
- Participation in virtual conferences:
 - NTCA, Kentucky Public Health Association
 - Presented poster on most recent program evaluation plan
- Presenting program evaluation success in CDC “Brown Bag”



Future Program Activities

Planned TB Program Activities

- Rebranding for success – overhaul of training and educational materials
 - Updating clinical guidance reference documents and website
 - Refreshing internal SOPs
- Partner with stakeholders to enhance TB knowledge and awareness:
 - Kentucky Rural Health Association
 - Kentucky HAI Program “Boot Camp”
- Development of general public LTBI Knowledge and Awareness campaign
 - Local health department objectives – increase in clinical knowledge and surveillance activities
 - Goals of promoting awareness among community providers

Waverly Hills Sanatorium



Waverly Hills Sanatorium



Waverly Hills Sanatorium



Thank You!



Charles H. Rhea, MPH
TB Epidemiologist
Charles.Rhea@ky.gov



Emily Anderson, RN, BSN
Program Manager/TB Controller
EmilyA.Anderson@ky.gov



Michelle Stephens, RN
TB Outreach/Education Nurse
Michelle.Stephens@ky.gov



KENTUCKY CABINET FOR
HEALTH AND FAMILY SERVICES



Kentucky Public Health
Prevent. Promote. Protect.